



Energy, materials, recycling and disposal done right.

July 17, 2013

**RE: IMPORTANT NOTICE ON
REFUSE/RECYCLING SERVICE**

Resident
123 Main St.
Anywhere, USA 12345

Dear North Canton Resident:

On July 10, 2013, following a competitive bid process, the City's Board of Control executed a new contract with Kimble Recycling & Disposal which includes significant enhancements to the refuse and recycling collection service for residents. The upgraded service is designed to make collection easier and safer, provide cleaner neighborhoods, increase the volume of recycling, create additional revenue for the City, and stabilize costs.

The new service will be implemented over a two week period between August 1 - 15. Please read this letter carefully as it may answer many of your questions regarding how to participate in this new collection program.

ENHANCEMENTS TO THE REFUSE PROGRAM

95-gallon Refuse Carts - The primary change to the refuse program will be the distribution of a 95-gallon 2-wheeled cart to each resident in the City. The dark green heavy-duty container typically replaces 3-4 trash bags/cans, and provides a more convenient way for residents to store trash and transfer it to the curb. The carts are animal resistant with attached lids, resulting in cleaner neighborhoods. The carts will be emptied by an automated truck which enhances safety for pedestrians and motorists. Your new trash cart will be delivered sometime between August 1 and 15. While your pickup day will not change, please have your new cart out by 6 a.m. on collection day as some pickup times may change.

65-gallon Refuse Carts for Low Volume Generators – If you are a low volume generator, please be aware that you can opt for a smaller (65-gallon) 2-wheeled refuse cart. Notify Kimble prior to August 1st if you prefer the smaller cart (call 800-201-0005 or email customerservice@kimblecompanies.com). You can also choose at a later date to switch from one size cart to the other.

Full Refuse Service Continues – Your refuse service is NOT limited to the contents of your new refuse cart. You may set out extra bags and bulk items next to your cart if necessary, and they will be picked up. If you desire a second refuse cart, you may contact Kimble at 1-800-201-0005 to lease one for an additional \$3.00 per month.

Back Yard Service – Although the new carts are easy to maneuver and should provide residents with a more convenient method for transferring refuse to the curb, a “Back Yard” service is available from Kimble for just an extra \$2.50 per month. For “Back Yard” subscribers, the Kimble driver will walk up to 150 feet from the curb to retrieve your refuse placed outside adjacent to your home or garage at ground level. Call the City of North Canton Utilities Department at 330-499-4801 to sign up for “Back Yard” service. If you are currently signed up for “Back Yard” service, you will automatically continue to receive it.

Automated Trucks Powered by Natural Gas – The use of the 2-wheeled carts facilitates collection by Kimble with new automated trucks powered by natural gas, which operate more quietly and efficiently. Natural Gas is a cleaner burning fuel (less emissions) which improves the environment of the City’s neighborhoods. The natural gas is also generated here in Eastern Ohio, which helps the local economy and reduces dependency on foreign oil.

ENHANCEMENTS TO THE RECYCLING PROGRAM

65-gallon Recycling Totes – Each resident will receive a 65-gallon 2-wheeled recycling cart. The bright green heavy-duty cart includes information on the lid regarding what can be recycled, and provides a more convenient way for residents to recycle large quantities. The carts also enable collection by an automated truck which enhances safety and eliminates blowing and scattering of recyclables. Your new recycling cart will be delivered sometime between August 1 and 15. Please do not use your recycle cart for extra trash. Recycle carts containing refuse will not be emptied and will be tagged to notify the resident of improper use. If you desire a second refuse cart, you may contact Kimble at 1-800-201-0005 to lease one for an additional \$3.00 per month.

Additional Plastics Now Recycled - In the past only plastic containers labeled #1 (PET) or #2 (HDPE) could be recycled. Kimble is now accepting “rigid” plastic containers labeled #3-#7, in addition to #1’s and #2’s. Most plastic products are labeled on the bottom with a recycling symbol consisting of arrows that cycle clockwise to form a rounded triangle, and enclosing the number 1, 2, 3, 4, 5, 6, or 7. Any rigid food container or other consumer product container labeled in this fashion can now be included for recycling. Examples of plastic containers previously excluded that can now be recycled include salad dressing bottles, peanut butter and jam jars, juice bottles, squeezable bottles (ketchup and mustard), clam shell food containers, microwavable food containers, yogurt containers, margarine tubs, baby milk bottles, shampoo bottles, cooking oil bottles, hand soap bottles, apple sauce cups, cool whip containers, and plastic flower pot containers. **Plastic items not acceptable include plastic bags, shrink wrap, Styrofoam, toys, motor oil and antifreeze containers.** As you can see, there is a tremendous amount of material which can be diverted from your waste can to your new 65-gallon recycle cart. Recycling a ton of plastic saves the energy equivalent of 1500 gallons of gasoline!

Single Stream Recycling - There is no longer a need to bundle your newspapers, cardboard, or any other materials separately. All recyclable materials can be mixed together in your new recycle cart as a “single stream” of recyclable material. The individual components of the mixed recyclables or “single stream” will be segregated and prepared for market at Kimble’s newly automated recycling facility. See the attached complete list of all the items which can be placed in your recycling cart to be recovered and returned to markets.

Kimble Donates to North Canton's Charity of Choice Based on Recycling Tonnage - As part of the new and expanded recycling program, Kimble has committed to donating up to \$15 per ton for all recyclables generated by the City's curbside recycling program. Depending on the participation and success of the program, this could result in donations of several thousands of dollars to the local charity or community project of the City's choice.

Residents Can Keep the Blue Recycling Bins – The blue recycling bins currently used by residents will not be collected. Residents are free to use these bins for overflow recycling collection, indoor recycling collection, or other beneficial use.

REFUSE AND RECYCLING COLLECTION GUIDELINES

Residents will continue to be invoiced by the City of North Canton for refuse and recycling services which includes free use of carts (one for refuse and one for recycling). Please note the monthly price for curbside service is being reduced from \$13.17 to \$13.02. Residents who choose to lease extra carts will receive an invoice from Kimble for cart lease only (\$3.00 per month per extra cart).

Please remember to set your new refuse and recycling carts at the curb by 6 a.m., as some pickup times could change. The carts should be between 2-3 feet off the street with the lid openings facing the street. The carts should also be at least three feet apart, and 3 feet from other objects as such parked cars, mail boxes, trees, or bulky trash items.

As in the past, items such as swing sets, carpet, tree limbs, gutter and down spouts must be cut to 48 inches or less, bundled, weigh less than 50 pounds, and placed at curbside for collection. Small amounts of construction and demolition debris (C&D) are acceptable however, for large amounts or contractor generated C&D contact Kimble to arrange for a temporary dumpster.

As before, the weekly refuse collection service DOES NOT include, tires, batteries, automotive/truck parts, paint, oil, fluorescent bulbs, gas cans, propane tanks, hazardous/infectious waste, flammable liquids, and any waste prohibited from disposal in a municipal solid waste landfill. (Call the Solid Waste District for information on disposal of these items: 800-678-9839). Appliances will be accepted if they have been tagged by a certified technician for Freon removal.

Please call Kimble's customer service office with any questions about the program at 1-800-201-0005, Monday through Friday, between the hours of 7:00 a.m. and 5:30 p.m., or on Saturday from 7:00 to noon. To learn more about Kimble, log on to our website www.kimblecompanies.com. We appreciate the opportunity to continue our service to the City of North Canton.

Sincerely,

Your Kimble Service Team

INSTRUCTIONS FOR TWO WHEELED CART PLACEMENT

PLEASE DO THIS

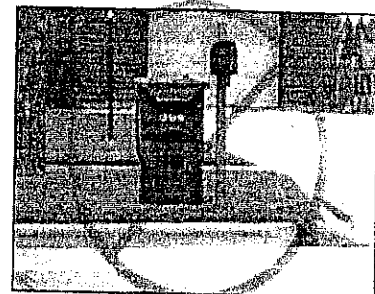
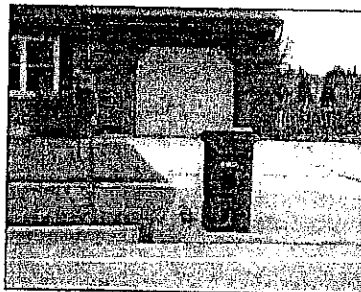
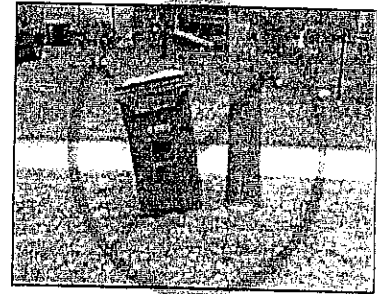
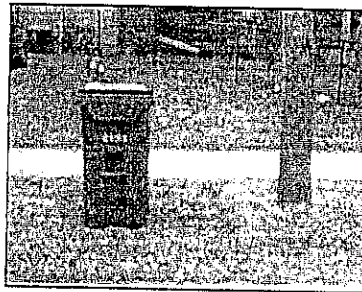
NOT THIS

Placement of Cart: The carts need to be within 2 feet of the street. The best placement for the carts is at the end of the driveway or on the grass within 2 feet of the road.

Give us some room: With the automated collection trucks we need some room away from obstructions like trees, mailboxes and cars.

Loading your cart: We recommend bagging your trash so it won't stick to the inside of the cart. This will also help to keep the carts clean on the inside. Do your best to break down the items inside the cart so they don't lodge themselves inside and make it difficult to dump.

Face cart towards the street: Put your cart at the street so the arrows on the lid of the cart will point towards the street.



THANK YOU FOR YOUR HELP!

EXAMPLES OF ALL THE RECYCLABLE ITEMS THAT ARE CAPTURED BY KIMBLE RECYCLING & DISPOSAL

Plastics:

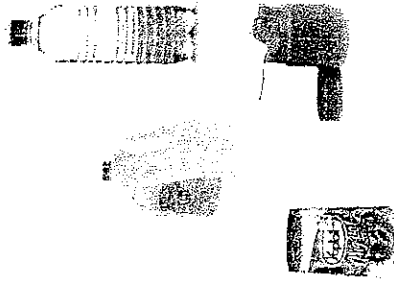
- #1: Soft drink bottles, water bottles, peanut butter jars, window cleaner bottles, mouth wash bottles
- #2: Laundry detergent bottles, windshield washer fluid bottles, coffee containers, milk jugs, butter tubs, medicine bottles
- #3: Shampoo bottles, cooking oil bottles, hand soap bottles, gladware container lids, and juice bottles
- #4: Mustard bottles, margarine and ice cream tub tops, squeezable bottles
- #5: Cool whip containers, gladware tubs, plastic flower pot containers, apple sauce cups, plastic cups
- #6: Plastic cookie tray dishes, vegetable tub containers, take-away containers
- #7: Orange juice plastic bottles, kids snack containers, some ketchup bottles

Fiber:

- Newspaper
- Magazine
- Corrugated cardboard
- Telephone books
- Mail
- Printer/copier paper
- Chipped board (cereal boxes)

Non-Fiber:

- Aluminum cans
- Aluminum trays, aluminum foil, cat food cans
- Bimetal cans
- Empty aerosol cans
- Clear brown or green glass bottles
- Plastic containers marked #1 to #7



KIMBLE

Energy, materials, recycling and disposal done right.

1-800-201-0005

NO SORTING NEEDED! PUT ALL YOUR RECYCLABLES IN YOUR KIMBLE TOTE!

There is no need to bundle your newspapers, cardboard and other materials separately. We do encourage you rinse your recyclable containers to help reduce odors, insect attraction, liquid soiling of fiber products and rejection of containers at the recycling plant.

Look for the recycling symbols embedded at the bottom of most plastics bottles to identify the #1 - #7 recyclable plastics. All the recyclable items can be mixed together in your recycling container. The recyclables will be segregated and prepared for market at our recycling facility. **Thank you for helping make your community recycling program a success!**

We do not recycle paint cans, or anti-freeze and motor oil containers. We do not recycle wax cartons, batteries, light bulbs, or wire hangers. With regard to plastics #1 through #7, we recycle the rigid containers used for food, beverage, and health and beauty aid products, but not plastic bags, Styrofoam, toys, or plastic utensils.

Kimble Recycling & Disposal
3596 State Route 39 NW
Dover, Ohio 44622
1-800-201-0005
www.kimblecompanies.com